



**Sustain & Save**

Contributing Towards  
A **Sustainable** Future

---

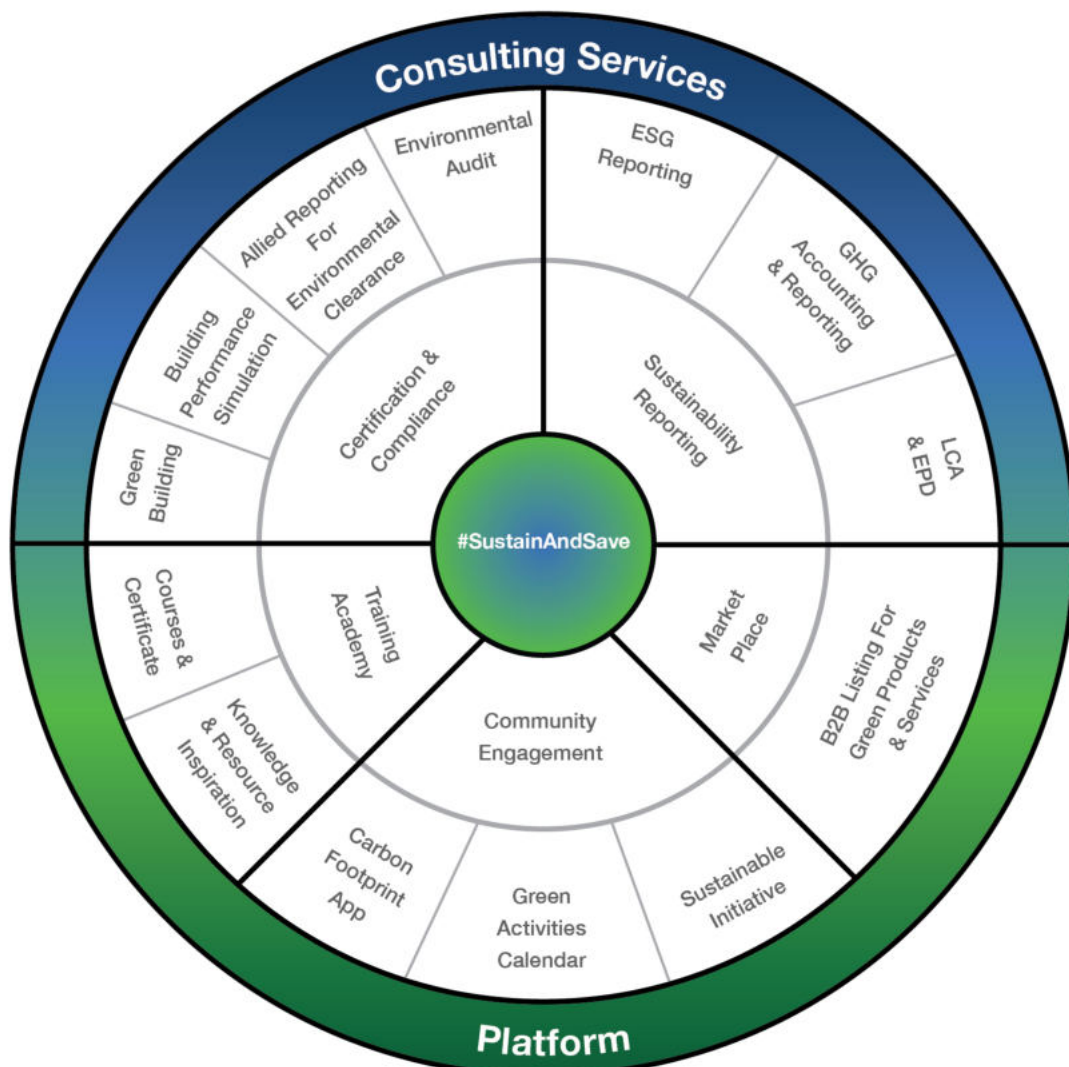
# About Us

We are motivated and focused on delivering solutions toward a Net Zero transition, navigating the intricate landscape of sustainability reporting and implementation.

Embracing the concept of Sustain and Save we envisage being a global leader in providing impactful solutions in the form of services and an innovative and interactive platform for Net Zero Built Environment for all homes and businesses. We aim to integrate sustainability into the core business value and transform buildings and companies into environmentally responsible ones.

Simplify, Synergize, and Deliver Sustainability are pillars of the company that truly believes that each one of us has the potential to be energy-efficient, water-efficient, and waste-sensitive.

With our deep sector knowledge, we help clients to capitalize on holistic sustainability knowledge and conservation mechanisms and assess and manage risk to deliver responsible growth.



# Vision

A one-stop solution for  
Sustainability

# Mission

To be at the forefront of Simplifying,  
Synergizing, and Delivering  
Sustainability for a Net Zero &  
Climate secure Future.



**2012**

ESTABLISHMENT YEAR



**12+ YEARS**

WORK EXPERIENCE



**50+**

CLIENTS



**150+**

PROJECTS



**5+**

COUNTRIES



**10+**

CITIES

# #SustainAndSave



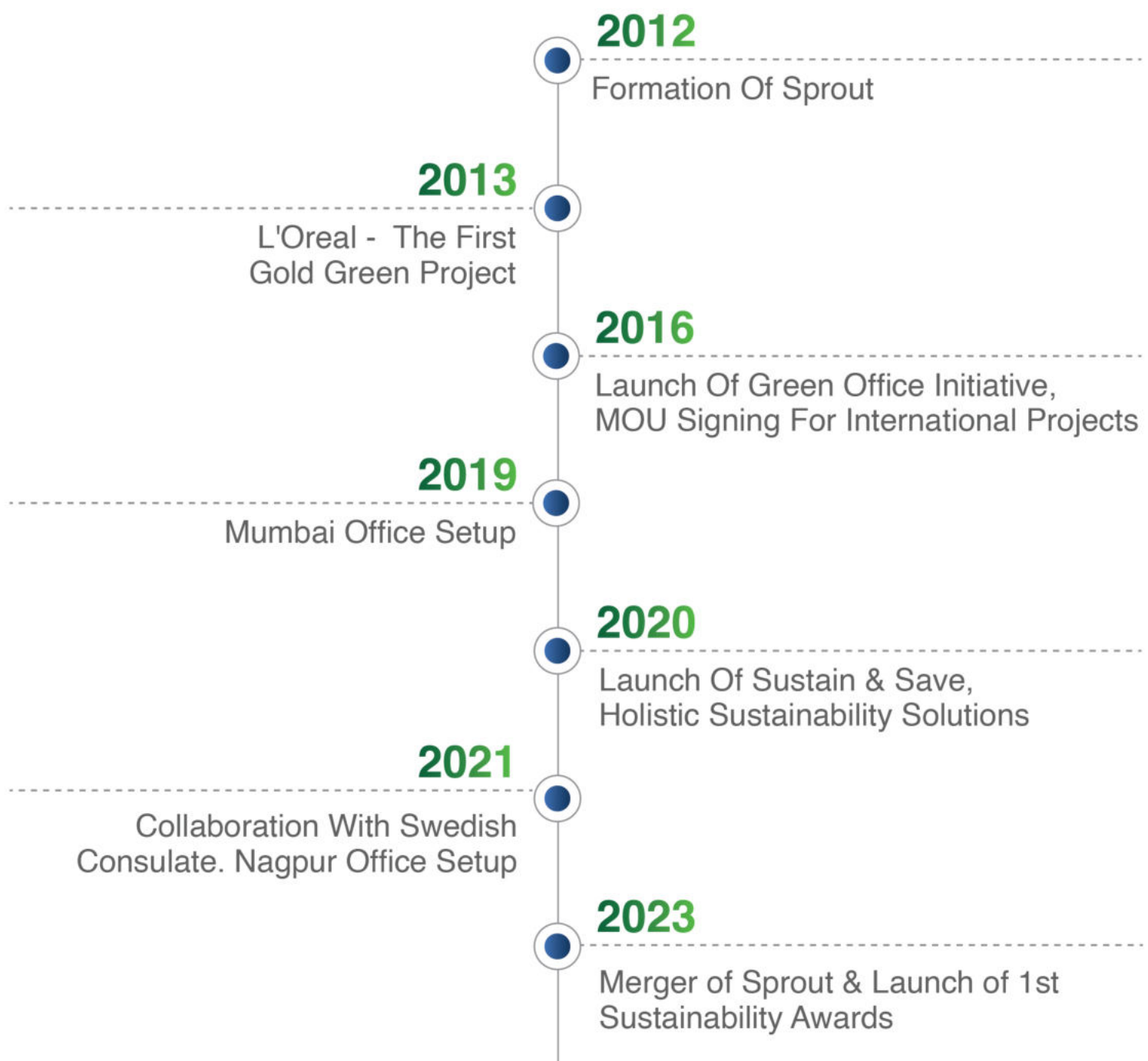
**Sustain & Save**



# Our Values

We understand that every company's journey is unique, and we customise green solutions to align with your business operations, ensuring your transformation into a sustainable leader.

**Quality . Customer Satisfaction . Integrity . Responsibility & Collaboration**





# Sustainability **Reporting**

Businesses are now looking beyond financial reporting alone. It no longer satisfies the needs of shareholders, customers, communities, and other stakeholders for information about overall organisational performance. We help companies / organisations systematically use environmental, social, and governance (ESG) factors in their investment decisions, sustainability plans, and strategies. Regardless of your organisation's scale, we are here to guide you on the path to ESG excellence, helping you realize its immense potential. From BRSR and GRI to SBTi, CDP, TCFD, and SASB, we offer comprehensive expertise in preparing Annual ESG Sustainability Reports. As stewards of sustainable progress, we craft Net Zero Transition plans that harmonize with your business objectives while upholding the finest scientific solutions.

ESG helps improved performance, Enhanced brand reputation , reduced risk and increased access to capital Investments. Our services include ESG assessment, gap analysis, strategy development and Implementation support. Our special focus is to encourage SME'S and manufacturing sector to create a road map towards a more sustainable brand.





# ESG Reporting



TASK FORCE ON  
CLIMATE-RELATED  
FINANCIAL  
DISCLOSURES



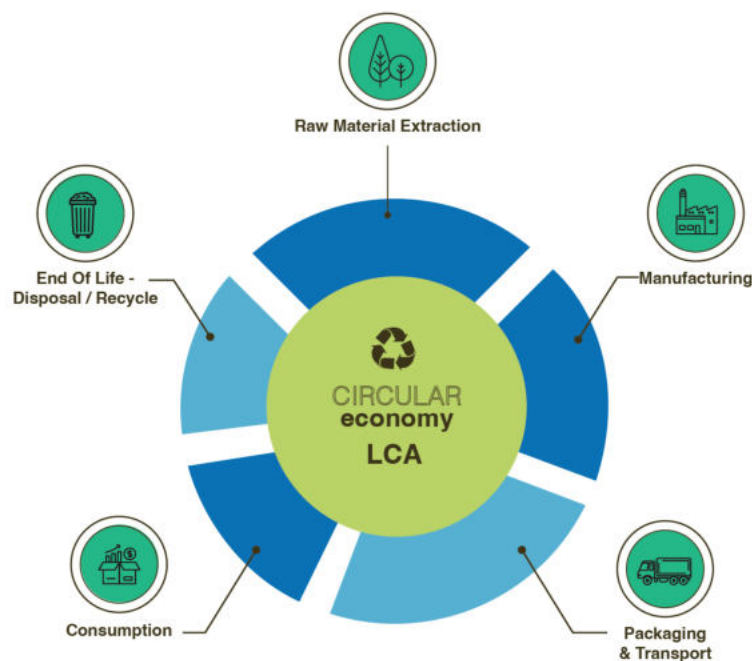
## GHG Accounting and Reporting

The primary objectives of GHG accounting are to identify the sources of GHG emissions, quantify the emissions, and develop strategies to reduce emissions while promoting sustainable development. We help you create the right road map.

Our comprehensive solutions help businesses and organizations achieve carbon neutrality by assessing, reducing, and offsetting their carbon emissions. Our expert team conducts thorough carbon footprint assessments, develops tailored strategies to minimize emissions, and assists in implementing sustainable practices. Through strategic partnerships, we offer verified carbon offset projects to balance any remaining emissions.

# Life cycle Assessment of Products and Services

We specialise in the art of conducting meticulous LCAs for products and services. This powerful tool will help to identify emission hotspots across the entire product life cycle, from inception through manufacturing, utilization, and disposal. Assess the full environmental impact of your product and service, from cradle to grave. We help you understand the carbon footprint of your products to inform sustainability efforts and meet customer demand for transparency. An LCA is the backbone of credibility for your product's sustainability claims.



## EPD Certification

Environmental Product Declarations are primarily intended to facilitate business-to-business transactions disclosing the environmental impact of a product. Although they may also be of benefit to consumers who are environmentally focused when choosing goods or services. Companies implement EPDs to improve their sustainability goals and to demonstrate a commitment to the environment to customers. We with our expert collaborators help companies receive this certification for global representation.

**TUV Sud Certified LCA consultants according to ISO 14040:2006 and 14044:2006**

**Our Pune office is : ISO 9001:2015 and IGBC Gold Certified office.**



# Green Building Certification & Compliance

The built environment has a critical role to play in responding to the climate crisis. Buildings are responsible for 39% of annual global greenhouse gas emissions and 40% of all raw material consumption. Sustainable design contributes to reduce carbon emissions, helps combat climate change, and preserve natural resources. Some quantifiable numbers 30–50% reduction in energy consumption, up to 40% reduction in freshwater demand, 40–65% reduction in building water consumption, 30–40% reduction in operational cost of buildings along with government benefits FSI.



A green building design reduces carbon footprint, and efficiently manages to reduce energy consumption. The buildings are made more climate responsive and environment responsive to ease the way of living.

Every project has unique needs and requirements that need to be met to acquire a green building certificate; be it a built environment project, product or green systems for your organisations.

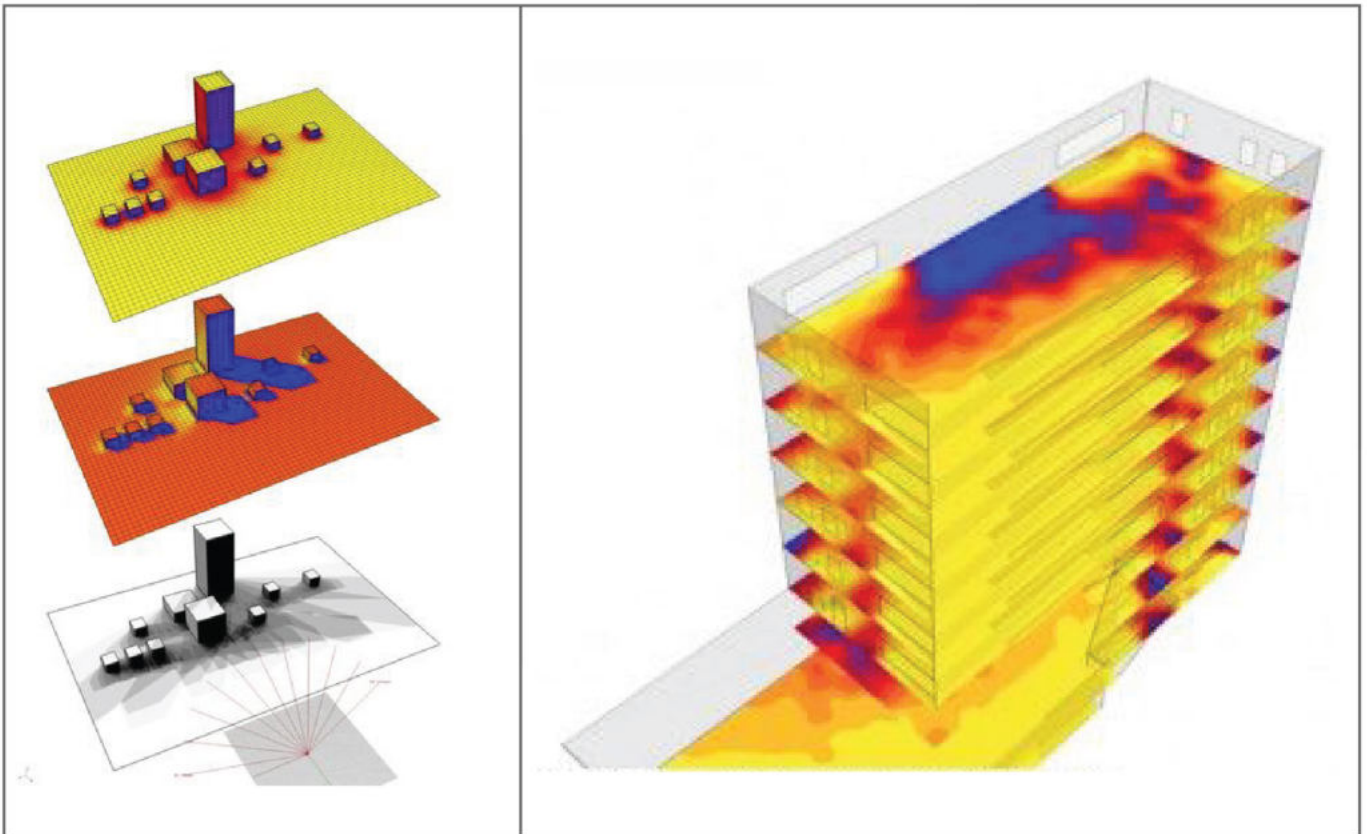
A green building certificate is your ultimate goal to build green and sustainable buildings. At Sustain and Save we help you achieve that. We assist you in completing and fulfilling all the regulatory requirements and documentations to get you a green building certificate. We do this for various rating systems like LEED, IGBC, GRIHA, Edge and WELL amongst others.

We design and suggest smart green solutions to enhance the parameters of nature and climate. Our net-zero buildings are designed to provide savings in energy water and waste production on site. Eco interiors are also facilitated to provide use of interior materials and enhanced indoor environmental comfort to the occupants.



## Building Performance Simulation

Performing comprehensive analysis of building design at the conceptual stage for daylight, thermal comfort, wind and energy analysis with simulation software that help predict the performance of efficient and comfortable buildings. We use industry approved simulation tools to model and analyze the dynamics of buildings and its services, unraveling insights into energy efficiency, thermal comfort, visual comfort and overall environmental impact. By harnessing the power of simulation, we empower clients to make informed decisions, fine-tune designs, and navigate the complexities of regulatory compliance.



## Energy Audit

- Holistic assessment of environmental parameters like energy, daylight, acoustics and thermal.
- Identifying areas for efficiency improvement and provide tailored solutions for optimization.
- Conducting 3rd party commissioning and auditing for green building performance.

# Allied Reporting for Environmental Clearance

At Sustain and Save we provide reporting for all allied services required for Environmental Clearance.



## Shadow Analysis

Shadow analysis for designers to evaluate the movement of the sun across a site and understand how shadows cast by nearby buildings, trees, or other objects will impact solar access and radiation falling on the facade for green Building Certification and Environment Clearance



## Traffic Impact Assessment (TIA)

- TIA is performed in order to analyse the traffic conditions during the construction and throughout the project lifespan.
- Through TIA report we are able to identify whether a particular development project will have an impact on the safety and efficiency of adjacent roads.



## Disaster Management Plan

DMP are essentially provided to have a well-coordinated Disaster Response Plan for a project, which makes best use of combined expertise and resources. It is essential to report the same for efficient and successful disaster response.



## Energy Conservation Building Code Compliance (ECBC)

- ECBC Reporting is done to evaluate the annual energy usage of the building and apply various energy efficiency measures for ECBC Compliance.
- Reporting and compliance are done for both ECBC and R-ECBC ie for Residential sector.

# Sustain & Save Sustainability Platform

The Sustain and Save marketplace platform simplifies and integrates sustainability into everyday life, aiming to transition from a linear economy to a circular economy. It's a listing platform of green certified products that connects vendors and clients. It includes listings from various sectors such as Waste Management, Construction Materials (Interior and Exterior), Energy (Solar) and Transportation (EV),etc . Through this platform, we support and encourage eco-friendly businesses.

**This marketplace connects and supports vendors and users for any solution on sustainability**



**Through the platform we will help clients with the following features :**

- For scope 1, scope 2 ESG reporting
- Complementary products/Services for creating a greener supply chain i.e., connection to other allied services or products
- Submitting competitive quotes for requirements
- Filtration of leads and efficient communication with users
- Calculation of Carbon Footprint for organisations
- Get competitive and comparative quotes
- Profiling and performance analysis of vendors
- Tools for assessment of cost and energy savings
- Streamlining communication with multiple vendors



# Community Engagement Platform

Community Engagement Platform: Our carbon footprint application tracks individual sustainable habits, measuring CO2 emissions saved, waste diverted, and water saved. Collaborative initiatives, focusing on various Sustainable Development Goals (SDGs), strengthen our community and drive sustainable behavior change. These initiatives include activities like plogging, Clothes Swaps, Plastic Collection Drives, and Upcycling and Recycling.

1.

**Carbon Footprint App:** Our community Engagement Platform offers a carbon Footprint Application that helps in tracking Individual Sustainable habits on 3 parameters like Energy saving (kWh) Co2 emission Saved (kgs), Waste Diverted (Kgs), and Water Saved (Ltrs) by logging various Activities.

2.

**Host Green Activities:** Publish, host green events and activities. Get green credits and badges for completing these activities. Our Collaboratives Initiatives on various SDGs Strengthen our community to be built thus transforming practices to deliver a more sustainable future.

3.

**Environmental Impact and social impact projects:** Our collaborative Initiatives include Plogging, Clothes Swap, Plastic Collection Drives and Upcycling and Recycling. We help companies create innovative and path breaking projects for social engagement , impact creation helping them identify the right partners for collaborations and implementation.

4.

**Knowledge and Resource Inspiration:** This section features inspiring stories, case studies, green news, and impactful learning to make sustainability more accessible to a wider audience.



# Sustain & Save Training Academy

We deliver comprehensive training courses in the realm of sustainability from corporates to educational institutes we provide a range of courses. Our mission is to enrich your understanding of the global climate challenge, train students and professionals on ESG and the imperative of a Net Zero transition, and the transformative potential of sustainability as both a career path and a way of life. Whether you're a student charting your future a corporation seeking to embed sustainability into your DNA or a professional looking for a certification, our tailored courses offer valuable insights and actionable knowledge for a brighter, more sustainable future.



Get certificate on  
completion of course

Get internship and job  
opportunities in the field  
of sustainability

## Training Offered

- Green Buildings - Net Zero Built Environment
- ESG Reporting
- Net Zero Built Environment Vision
- Vocational Training on Sustainability
- LCA Training
- Certification Courses on Sustainability

# Our Clients



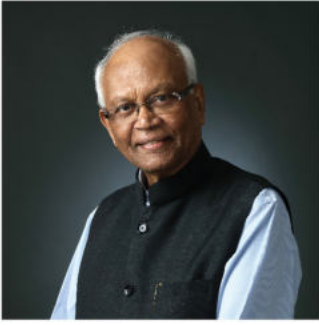
## INTERNATIONAL



\*Work Done In Association With BEE



# Advisory Board Members



**Dr. Mashelkar, FRS**  
Board Chairman



**Dr. Ganesh Natarajan**  
Convener



**Pradeep Bhargava**  
Board Member



**JP Shroff**  
Board Member

## Our Team



**Pranati Shroff Munot**  
Founder - Director



**Ankita Shroff Sarda**  
Founder - Director



**Namrata Dhamankar**  
Founder, Green Building



**Siddharth Bhagwat**  
CEO



**Suvarna Suryawanshi**  
Business Head, Green Building



**Sneha Mokha**  
Business Head, Nagpur

# Memberships & Affiliations



ISHRAE



## Recognisations & Awards

Aesa Awards for Scorpio Project	Sustainability Crusader Award	PMC Award for Pune City Certification	IGBC Fellow Award
------------------------------------	----------------------------------	---	----------------------

## Contact Us

📍 **Pune Office:** Sustain & Save, Shroff Office, 7,8,9 Aditya Ceentegra, FC Road, Shivaji Nagar, Pune - 411004

📍 **Mumbai Office:** 201 Inder Tower , Kakasaheb Gadgil Marg, Dadar West, Mumbai - 400028

📍 **Nagpur Office:** Ashok Mokha Architects, Plot5, Ghatate Layout, Civil Lines, Near Bhole Petrol Pump, Nagpur - 440001

☎ 9767890575, 8180027226 🌐 [www.sustainandsave.com](http://www.sustainandsave.com) ✉ [info@sustainandsave.com](mailto:info@sustainandsave.com)

📷 @sustain\_and\_save

📘 Sustain And Save

🏢 Sustain And Save Pvt. Ltd.



Please Scan For More Details About Sustain & Save